



Contact us TODAY for additional information at 903-794-3606 or

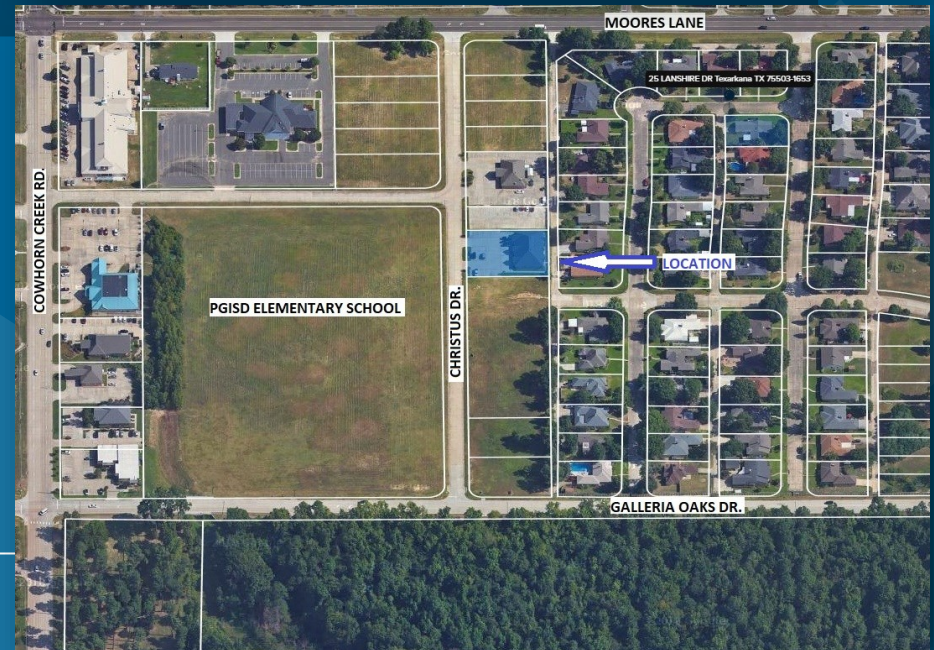
Email: Donovan@schimmingcompany.com

NOW LEASING

5522-5524 PLAZA DRIVE

- 3,406 Square Feet
- Can be divided into two suites.
- 8 offices
- Conference room
- Waiting area
- Reception office
- Storage
- Break area with coffee bar & sink
- Two restrooms

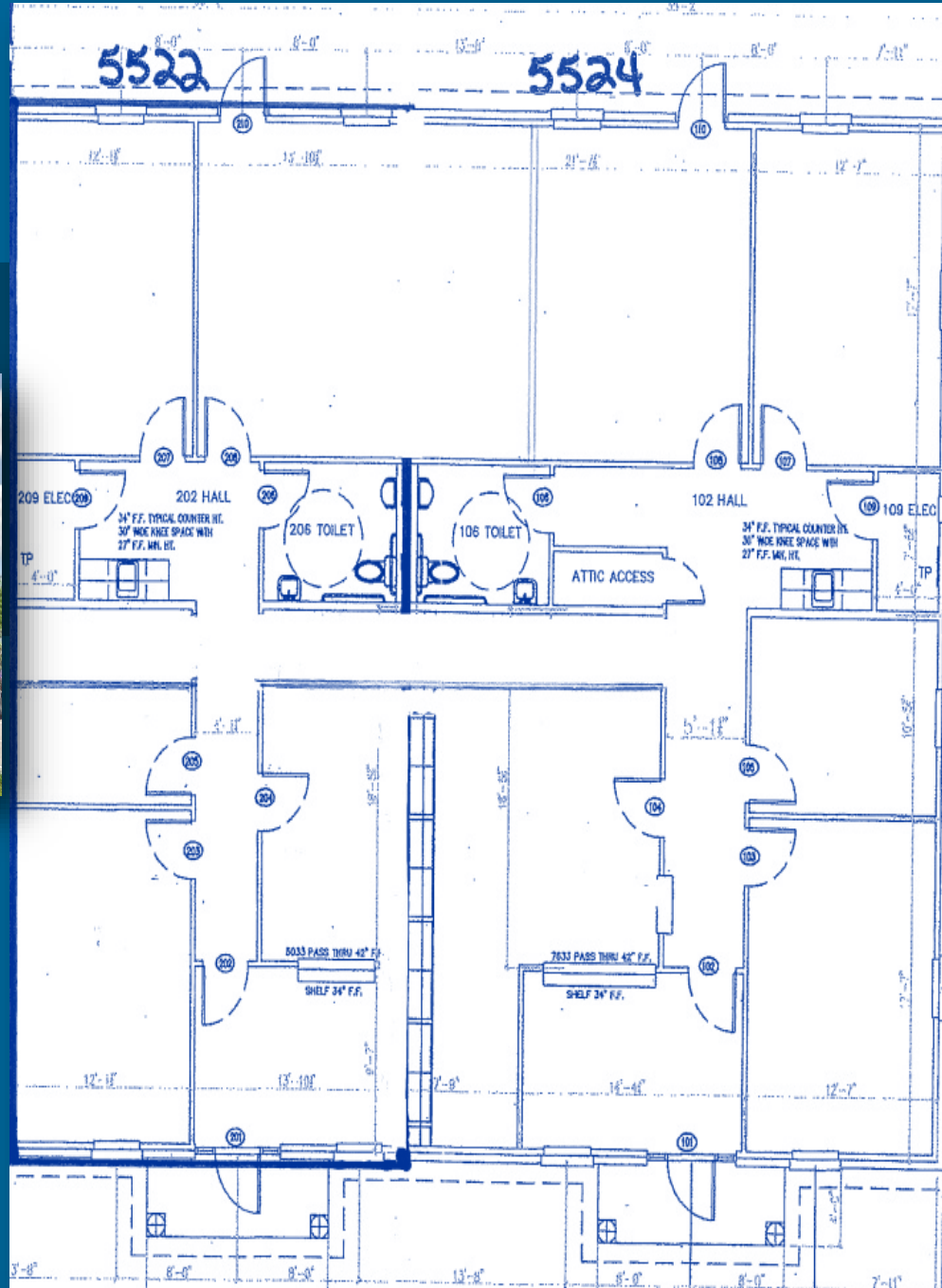
Professional Office centrally located near Christus St. Michael Health Care Center, Collom & Carney Clinic, and a variety of professional services, including attorneys, CPAs, real estate offices, banks, insurance agencies, physicians, and restaurants.



The information provided herein was obtained from sources believed reliable; however, Schimming Company makes no guarantees, warranties or representations as to the completeness or accuracy thereof. The presentation of this property for sale, rent or exchanges is submitted subject to errors, omissions, change of price or conditions, prior sale or lease or withdrawal without notice.

FLOOR PLAN

3,046 SF



Contact Us Today!

To learn more or schedule a tour:

☎ 903-794-3606

✉ Donovan@schimmingcompany.com

🌐 www.schimmingcompany.com

The information provided herein was obtained from sources believed reliable; however, Schimming Company makes no guarantees, warranties or representations as to the completeness or accuracy thereof. The presentation of this property for sale, rent or exchanges is submitted subject to errors, omissions, change of price or conditions, prior sale or lease or withdrawal without notice.