



Contact us TODAY for additional information at 903-794-3606 or

Email: Donovan@schimmingcompany.com

NOW LEASING 5329 SUMMERHILL RD.

- 964 SQ Ft.
- 4 offices
- Reception / Waiting
- Storage
- Coffee bar with sink
- Located just north of I-30 in Summerhill Plaza
- Excellent Visibility and Traffic

Centrally located office near a variety of professional offices including attorneys, CPAs, real estate offices, banks, insurance agencies, physicians, and restaurants.

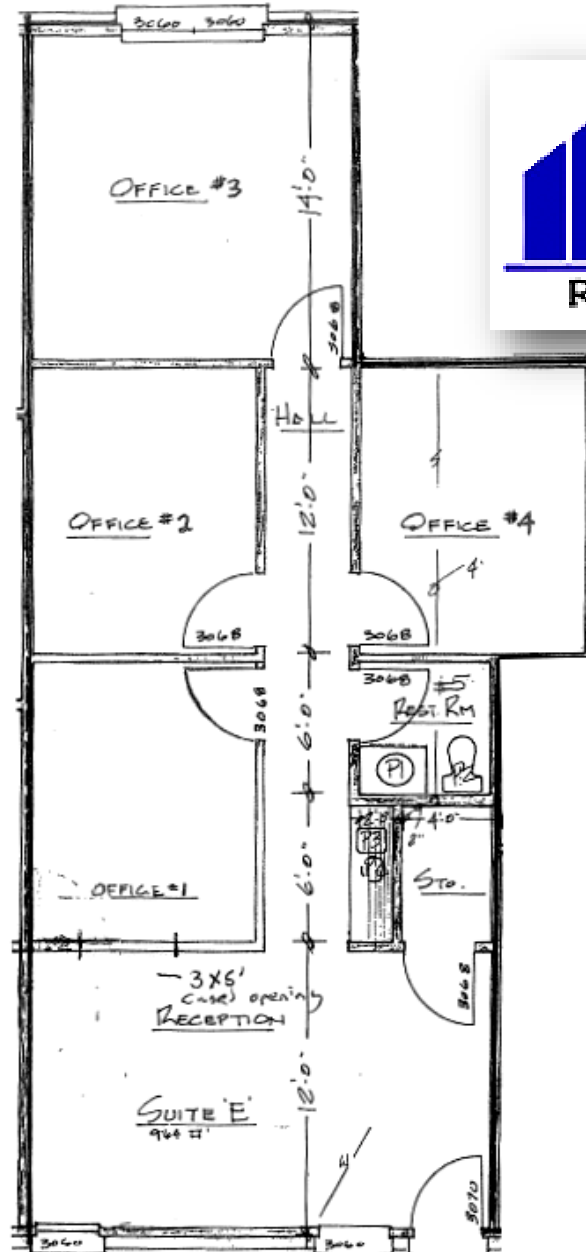
www.schimmingcompany.com



The information provided herein was obtained from sources believed reliable; however, Schimming Company makes no guarantees, warranties or representations as to the completeness or accuracy thereof. The presentation of this property for sale, rent or exchanges is submitted subject to errors, omissions, change of price or conditions, prior sale or lease or withdrawal without notice.

FLOOR PLAN

964 SF



CONTACT DONOVAN FOR MORE INFO
PHONE 903-794-3606
EMAIL: donovan@schimmingcompany.com
www.schimmingcompany.com

The information provided herein was obtained from sources believed reliable; however, Schimming Company makes no guarantees, warranties or representations as to the completeness or accuracy thereof. The presentation of this property for sale, rent or exchanges is submitted subject to errors, omissions, change of price or conditions, prior sale or lease or withdrawal without notice.