



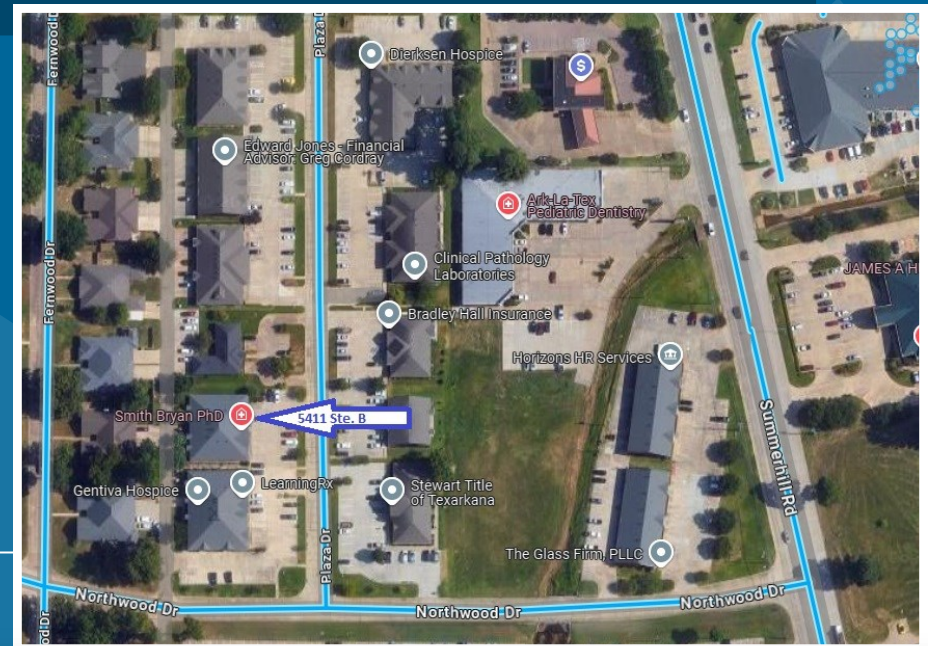
Contact us TODAY for additional information at 903-794-3606 or

Email: Donovan@schimmingcompany.com

NOW LEASING

5411 PLAZA DR. STE. B

- Just north of I-30 off Summerhill Road.
- 1,014 SF
- 4 large offices
- Reception/Waiting Area
- Storage
- Coffee Bar with Sink
- Common Area Restrooms
- \$1,400.00 per month
- **In close proximity to Christus St. Michael's Hospital and Collom & Carney Clinic, Dermatology Associates, Urology Associates, Red River Pharmacy, Orthodontists, Financial Advisors, Attorneys, Stewart Title, Insurance, and Banks. Several Restaurants including Flying Burger, Applebee's, Twisted Fork and Waffle House.**

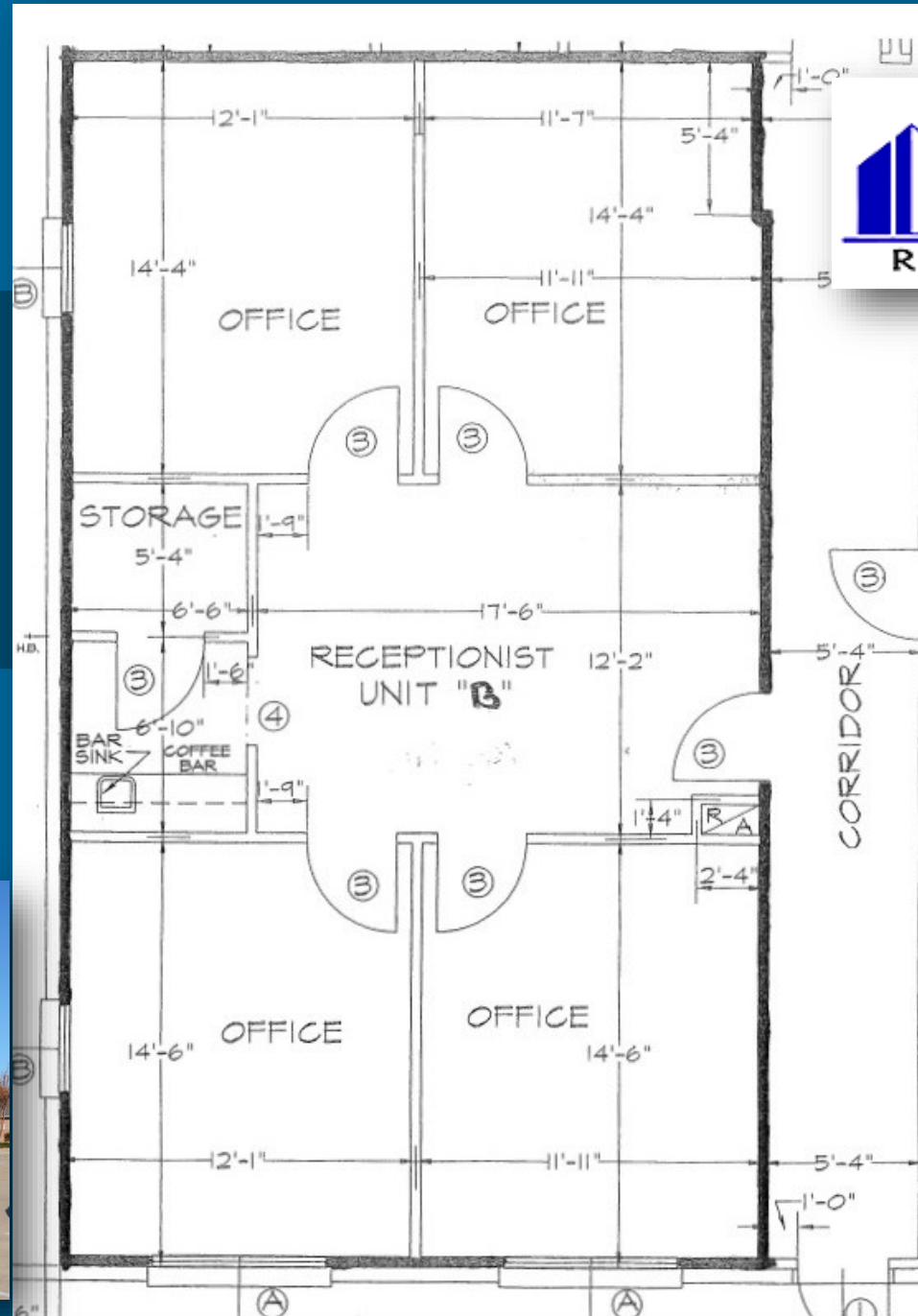


www.schimmingcompany.com

The information provided herein was obtained from sources believed reliable; however, Schimming Company makes no guarantees, warranties or representations as to the completeness or accuracy thereof. The presentation of this property for sale, rent or exchanges is submitted subject to errors, omissions, change of price or conditions, prior sale or lease or withdrawal without notice.

FLOOR PLAN

1,014 SF



CONTACT DONOVAN FOR MORE INFO
PHONE 903-794-3606
EMAIL: donovan@schimmingcompany.com
www.schimmingcompany.com



The information provided herein was obtained from sources believed reliable; however, Schimming Company makes no guarantees, warranties or representations as to the completeness or accuracy thereof. The presentation of this property for sale, rent or exchanges is submitted subject to errors, omissions, change of price or conditions, prior sale or lease or withdrawal without notice.